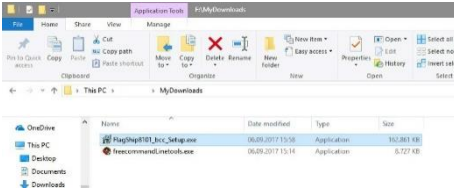


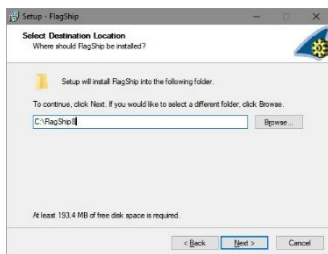
3. Install FlagShip

In the Windows Explorer, double click on the downloaded file *FlagShip(vers)_bcc_Setup.exe* , or execute it at CMD prompt. On Windows-XP you will be prompted for Administrator password, on Windows7 and newer confirm the UAC prompt “Do you want to allow this app...” by “Yes”. The whole installation takes approx. 3 minutes.



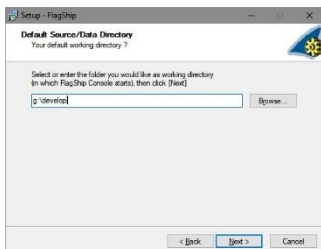
The FlagShip setup program will guide you thru the installation. Click on “Next” to start, or “Cancel” to abort the installation. Your computer can be off-line, since the install wizard does **not** pass any data to multisoft nor to anybody else.

The License Agreement is displayed next. Read it carefully and when accepted, click “I accept the agreement” and then the “Next” button.

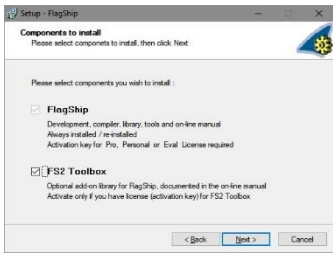


You may install FlagShip in any directory of your choice. Default is folder “C:\FlagShip8”, you optionally may use other, or the system directory “C:\Program Files\FlagShip8” - but this may in some cases cause access problems in Windows-7 and newer (since shadowed directory), see below. All FlagShip binaries, libraries, tools and examples will be stored in this folder and its sub-directories. There are no

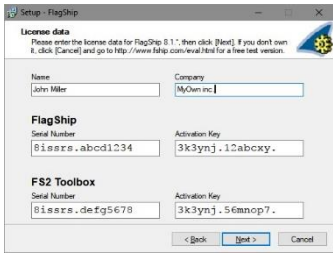
interferences with other FlagShip versions, if such are available on your computer.



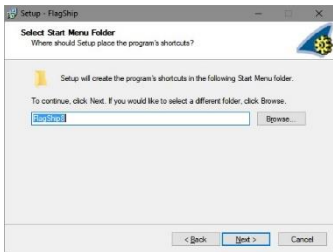
Next, you may specify the directory where your source files reside or will reside. The default setting is your home folder, but it is recommended to change it according to your needs, e.g. D:\Sources\Test etc. Note: the “FlagShip Console” environment (see chapter 6) will start in the specified folder.



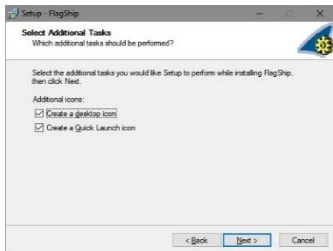
If you have purchased activation key for the add-on library “FS2 Toolbox”, activate the corresponding check box. If you don’t have it, let it unchecked. This library contains many additional functions (windowing, serial communication, statistics etc). All functions are call-compatible to Clipper’s NT2/CA Toolbox functions. See further details in the online manual section FS2



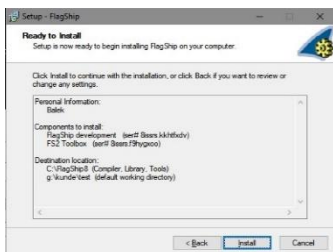
Now, enter the licensee data, i.e. your full name and optionally your company. Then enter the serial number and activation key for your FlagShip (in lower or upper case), which you got with the Activation Document; you also may use copy & paste. If you own FS2 Toolbox, enter also those s/n and key. If error occurs, check for typos. *Note:* data on this screenshot are for demonstration purpose only.



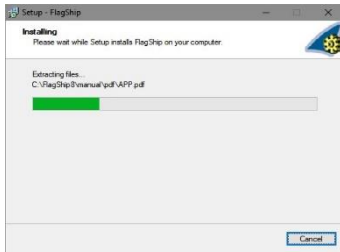
The Setup wizard creates common entry in the folder Start → All Programs. The default is “FlagShip8”, you may change it upon request. Also, an entry “FlagShip 8.x.y for BCC32” in “Programs and Features” is created, which can be at any time uninstalled from the Windows Control Panel.



Let’s create desktop icons for the on-line manual, and developer’s console environment



This screen let’s you check the entered data. Press “Next” if everything is o.k., otherwise the “Back” button let’s you to correct it.

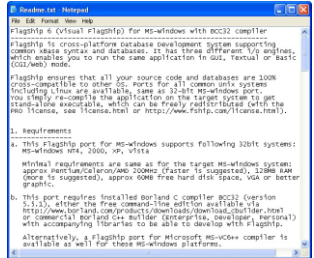


Now, the setup wizard installs FlagShip in the selected directory (usually in C:\FlagShip8 or C:\Program Files\FlagShip8). It additionally creates or checks ...\borland\bcc55\bin*.cfg files for BCC32 and creates batch file named *FlagShip_console.bat* in the installation directory. This batch file is assigned to the “FlagShip8 BCC Console” icon on your desktop.



The FlagShip installation is finished **successfully** now.

We suggest to read the instruction in the *Readme.txt* file.



Once finishing tests with the free test/evaluation version, you may purchase the licensed FlagShip version, see chapter 5 below. To install it, simply repeat this step (3) anew by entering your new license data, your preference remains unchanged. The same is valid when you update to newer version.

3.a Updating FlagShip

FlagShip is permanently maintained and often extended with new features. Check frequently the www.fship.com/whatsnew.html page for updates. If you already have VFS8 installed, and wish to update to newer sub-release, simply download the new *FlagShip*Setup.exe* file, invoke it and enter again your available serial number and activation key. Your default settings remain unchanged.

4. Uninstalling FlagShip

You may completely remove the FlagShip installation either by selecting Start → All Programs → FlagShip8 → Uninstall or by

- Start → Control Panel → Add or Remove Programs → FlagShip8
- Start → Control Panel → Programs and Features → FlagShip8

5. License Types, Support

There are three different license types available, see additional details and prices on <http://www.fship.com/price.html> :

- The free **Test/Evaluation license** is fully functional, and lets you test FlagShip with your applications without any risk. The only limitation is the evaluation period of 30 days and the requirement of using the created executables on the same computer where FlagShip is installed. On the registration page <http://www.fship.com/eval.html> you may select FlagShip and FS2 Toolbox for your used environment. Once satisfied with testing, purchase the Personal or Pro license.
- The **Personal** FlagShip (and FS2 Tools) license is intended as a low cost Starter Kit for personal, company internal/in-house and software developer use, as well as the presentation of applications. Its only limitation is the requirement of using the created executables on the same computer where FlagShip is installed, it allows access to the same shared database by two different users (or processes) simultaneously. You may not pass/sell the created applications (executables) to third parties.
- The FlagShip (and FS2 Tools) **Pro license** does not have any limitation. It is intended as the regular license kit for software developers who will resell their executables, and for large in-house systems, accessed simultaneously by any number of users. You also may pass/sell/distribute the by FlagShip created applications (executables, .EXE files) to anybody else.

There are generally no run-time fees, nor hidden cost. The development package is licensed to you/your company and may not be passed to any third party, but the .exe files created by the Pro license may freely be sold or passed to anybody. Refer to the License Agreement <http://www.fship.com/license.html> for full details.

Multisoft (or its distributor) grants **free technical support** for up to **6 months** after purchasing the package, see details on www.fship.com/support.html The common support e-mail address is support@multisoft.de

6. Using FlagShip

The FlagShip development package contains full compiler, libraries, tools and examples. All are located per default in the C:\FlagShip8 or C:\Program Files\FlagShip8 folder and its sub-directories. In addition to, the Setup wizard (3) creates development environment using batch file named FlagShip_console.bat located in the installation directory and assigned to the “FlagShip8 BCC Console” icon on your desktop.

As with any compiler, the application program is based on *source file*, which is usual text file (with .PRG extension) created by any editor, e.g. Notepad, UltraEdit, JEdit and similar program editors. Do not use MS-Word or similar text processing software, since it often adds special formatting code into the text, which may create you headaches later.

If you are familiar with interpreters like dBase, Foxbase or FoxPro, the difference is that FlagShip compiles the .prg files into native executable instead of interpreting the source, hence you don't need any run-time modules nor need to distribute your sources.

From the same source, FlagShip will create either GUI or textual oriented or basic i/o application. We will learn here in short all of them.

6.1 Invoke the development environment

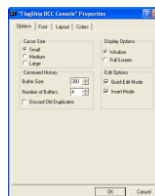
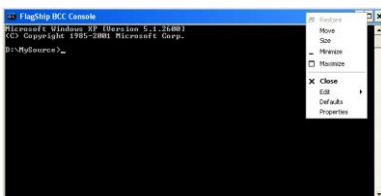


Double click the “FlagShip8 BCC Console” icon on the desktop. It opens CMD window with locally set environment variables and paths, required for compiling and debugging the application. This icon and the underlayed batch file is created by the Setup wizard according to your preferences. In this console window, simply enter

FlagShip -version

which displays information about the current FlagShip version. You may get short summary of compiler switches by **FlagShip -h**

Hint: you may adapt the window properties by a right click on the blue top bar. In the “Option” tab activate Quick Edit Mode checkbox (for copy & paste), and specify required screen and buffer size in the “Layout” tab, save and select “Save for future use...”



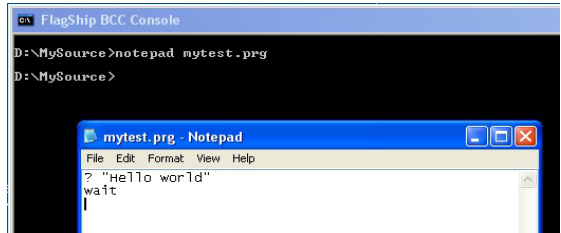
6.2 Create your first program

Invoke your editor, e.g. “*notepad mytest.prg*”, enter there

```
? "Hello world"  
wait
```

and save it. You alternatively may use the available example by

```
copy %FLAGSHIP_DIR%\examples\hello.prg mytest.prg
```



6.3 Compile your program

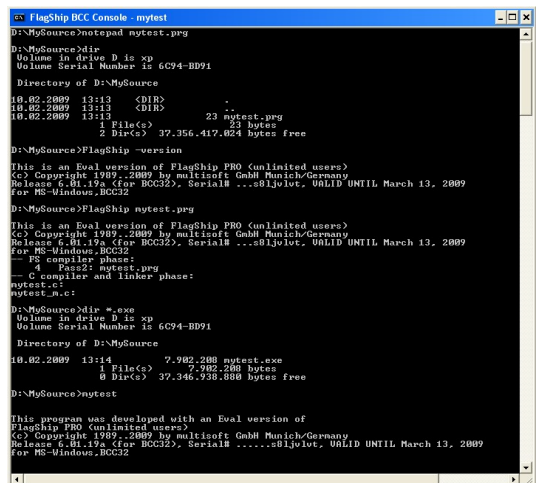
Enter

```
FlagShip mytest.prg
```

or

```
FlagShip -v mytest.prg
```

This simple command will first compile the .prg file to .c, then creates object file .obj and invokes the linker to link it with the library into final, native executable. In our case, the executable is named *mytest.exe* - you however may specify another name by the -o option, as described in the manual section FSC.



Note: if your application consists of more than one .prg file, you may compile all together by

```
FlagShip mymain.prg myadd1.prg myadd2.prg -o myapplic
```

where the first file is your main and the executable should be named “*myapplic.exe*”, or by using wildcards, e.g.

```
FlagShip my*.prg -Mmymain -o myapplic.exe
```

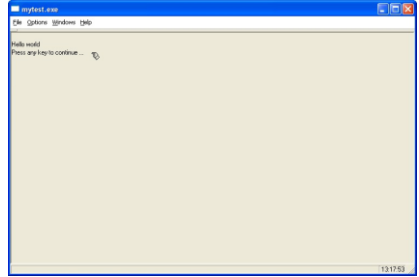
where the -M... option says that the program starts in module (UDF, procedure) mymain. You optionally may add the -io=g switch to compile for GUI mode only, which avoids displaying a small command window during execution. You also may use .c and .obj input files. Of course, compiling via the *make* utility is supported too. All these features are described in detail in the on-line manual “fsman” section FSC, see chapter 7 below for details.

6.4 Execute your first program

Now, invoke your application by

mytest

or by double click on the file *mytest.exe* in Windows explorer. It displays the given output text and then waits for Enter key to terminate. With an Eval version, the Test notice displays first.



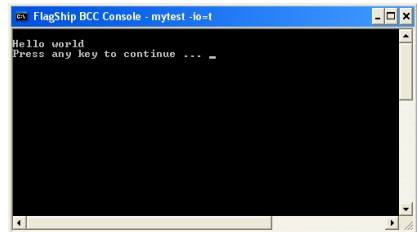
Instead of running it in *GUI mode*, you may force the execution in *Textual mode* (known e.g. from Clipper or dBase) by

mytest -io=t

or in the simplified *Basic i/o mode* by

mytest -io=b

see details in manual sections LNG.1.2 and LNG.9.7. These switches may be specified also directly at the compiling stage, refer to manual sect. FSC.1.3.



6.5 Compile and execute supplied examples

More interesting programs are available in the `\examples` directory located in the main FlagShip folder (see also note on page 9). Invoke

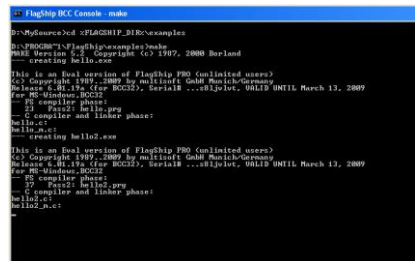
cd %FLAGSHIP_DIR%\examples

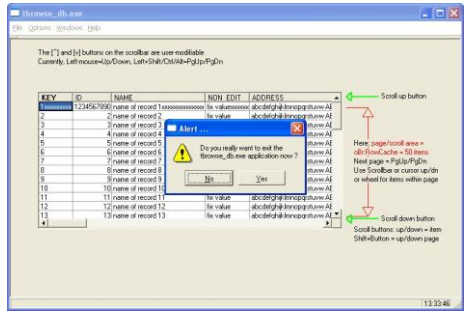
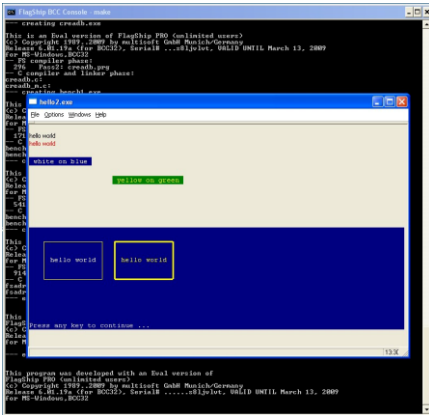
to select this directory, and then start the Make utility

make

to compile and execute all files there, by using the default template named *makefile* (described in the manual section FSC.2).

You will get e.g.:



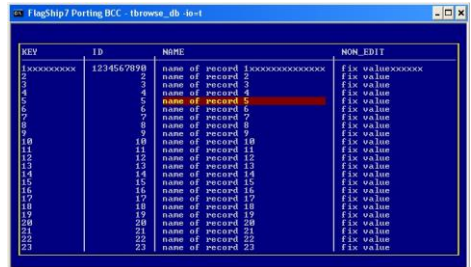


where the above also shows a prompt when aborting the execution by click on the [X] button at top right.

To run the same applications in textual instead of GUI mode, invoke **make terminal**

where you get the output very similar to Clipper, DOS or other terminal application.

You of course may compile and/or execute each program separately, according to 6.3 and 6.4 above, the instruction is also given in the header of each source file. When you wish to modify some of these examples, best to copy the source to your working directory first.



Note: on Windows Vista, Windows-7 or Windows-8 with active UAC (user account control), or with restricted user rights on Windows XP, you will not be able to create the output (.obj and .exe files) in the system directory \Program Files* without administrator rights; the compiler or make reports error “Could not open xxx.exe”. In such a case, copy the examples to your working directory

```
cd %FSWORKDIR%
mkdir examples
cd examples
xcopy /S %FLAGSHIP_DIR%\examples
```

and run the “make” and “make terminal” in this working directory. The copy is not required if you installed FlagShip in e.g. C:\FlagShip7 directory.

6.6 Debugging and testing

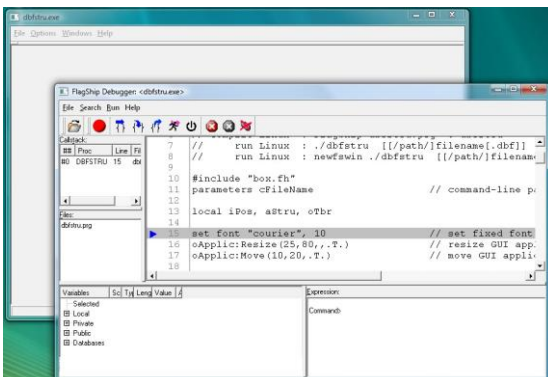
Nearly none of newly developed application is free of typos, syntax and logical errors. Fortunately, most of the problems are detected already at compile and link stage (see manual section FSC.1.8). When using prototyping of variables and the `-w` compiler switch (see manual LNG.2.6.6 and FSC.1.3), also the most misspelled variables are detected at compile-time as well. But neither the compiler nor the linker can detect errors in the program logic.

If your program does not behave as expected, you may

- either use the (common, old fashioned) output of the variable data in interest, e.g. `?# procstack()`, `"myvar="`, `myvar` to display the content of your variable named `"myvar"` on separate console window incl. the program location and call stack (you may redirect this output to file by e.g. `"myapplic -io=t 2>myapplic.log"`),
- or compile and run the application with FlagShip source-code debugger (see details in manual FSC.5), which gives you all the required information at any program stage.





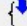
To avoid large typing here, we will use one of the standard examples to demonstrate the use of FlagShip debugger:

- a. Double click the *"FlagShip Console"* icon on your desktop (see 6.1 above)
- b. Either copy the available source and database
copy %FLAGSHIP_DIR%\examples\dbfstu.prg
copy %FLAGSHIP_DIR%\examples\tdbedit.dbf
or on Vista, Windows-7 or Windows-8 (see note on previous page)
cd %FSWORKDIR%\examples
- c. Compile the application with debugger
FlagShip -d dbfstu.prg
- d. Invoke the application
dbfstu



The debugger-window pops together with the application, and stops at the first executable statement of your main program (here in line#15)

You may now set breakpoints (where the application should stop before executing the statement) by a click on the line number, e.g. on line#39 and line#91. of `dbfstu.prg` .

Continue the execution, until breakpoint is reached, by F9 or click on the  button. You alternatively may step thru by   buttons (or by F11, F10), where the first steps over procedure or   function, whilst the second steps into (but only if the procedure is available in source code).

The program prompts you now for the database name. Just hit RETURN to see what happens: the debugger stops on the breakpoint at line#39. To observe your used variables, click on the [+] sign for “Local” or “Private” or “Public” variables. You alternatively may enter `len(trim(cfilename))` in the command window, which reports 0 in this case (the string is empty). By F11 or click on the \Rightarrow button, you will step thru back to line#21 etc. Continue by F9 and enter now `tdbedit` for the file name. The debugger stops again at line#39; you may observe variables anew and/or step thru. Then disable this breakpoint by click on line#39 (the red mark disables), and press F9 to continue. The database structure is displayed in browser, press ESC to exit the browser.

When pressing F2 key in the entry field for database name, the debugger stops at line#91 in *function listdbf()*. You may see the call-stack in the top left debugger window (or by `procstack()` in command window), where item#0 is the current procedure or function. Item#1 shows here the internal representation of code block, double click on this item#1 shows where it was created (set key...to...). Step thru or continue by F9, you will see a list of available databases in the current directory to be displayed, select one by Up/Down and ENTER key, or by mouse click.

When setting breakpoint on line#62, you may observe in debugger also the (or all open) database structure(s) and data by a click on [+] Databases.

To save breakpoints for the next run, either select File \rightarrow Save Status, and at begin of the next execution select File \rightarrow Restore Status of the debugger, or specify `SET FSDEBUG_AUTO=ON` in prompt of the FlagShip Console to save/restore breakpoints automatically. ESC in the database entry field will terminate the program.

6.7 Other tools

There are additional tools available in the folder `<FlagShip_dir>\Tools` including short textual description and full source code. Some of them are also documented in the manual section FSC.6. Here only some, the most interesting tools:

- **fsmake** creates semi-automatically template for the Make utility (see 6.5 above and manual FSC.2) for all (or selected) sources of your project(s)
- **dbu** is a database manipulation utility to create and/or manage database structure and data
- **fsi** is a simple interpreter, slightly comparable to dBase or Foxbase. It allows you quick data manipulation or syntax checking etc.
- **indexdump** may help you on problems with indices
- **webtools** provides source for the web*() functions in the standard library
- **foxconvert** is a helper for porting Foxbase and FoxPro sources. Note: when compiling Foxbase or FoxPro sources, use the `-fox` compiler switch and study the `<FlagShip_dir>\system\foxpro_api.prg` as well as the `<FlagShip_dir>\include\stdfoxpro.fh` files

Best to copy the source of interest into your working directory (see note in 6.5 above), and compile it there according to the description and header of the source.

In the `<FlagShip_dir>\System`, there are sources and APIs to modify the default behavior of many standard functions or classes. On requirement, copy the source into your working directory, compile there and link with your application. Use it with care and only if you really know what you are doing.

All standard header (*.fh, *.ch) files are available in the `<FlagShip_dir>\Include` directory.

Many examples are also available in the reference section (CMD, FUN, OBJ) of the FlagShip manual.

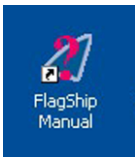
Note: the above `<FlagShip_dir>` marks your installation directory, i.e. either `C:\FlagShip8` or `C:\Program Files\FlagShip8` or `C:\Program Files(x86)\FlagShip8` etc., displayed/available by environment variable `%FLAGSHIP_DIR%` in the "FlagShip Console" window.

7. The FlagShip Manual

This first, short overview of FlagShip cannot and will not replace the full manual. In any FlagShip distribution, there are two complete manuals available:

- the on-line manual (named *fsman*) is available by mouse-click on your desktop, and
- the printable manual in .pdf format (requires e.g. Acrobat reader) is available in %FLAGSHIP_DIR%\manual\pdf* directory and/or is for download via <http://www.fship.com/manual.html>

Both are equivalent in content, however the on-line manual is updated more frequently (on each sub-release), whilst the .pdf manual is updated on main release only. The on-line manual also includes Release Notes for the used operating system (Linux, Windows etc), this file is available for printing in text form in the ...Manual\Relnotes.asc file.



To invoke the on-line manual, double click on the “FlagShip8 Manual” icon on your desktop.

Note: on special needs, you also may use its textual version by executing %FLAGSHIP_DIR%\bin\fsman_t.exe



Simply select the required section by click on the top menu (see Manual Contents for overview of sections), then select the chapter in the pop-up window to display the corresponding description. Browse the page(s) by PgDn or PgUp key.

Press the ESC key to close the manual description and/or the pop-up window. To exit fsman, press ESC in the main window, or select File → Exit, or click on the [X] top right button.

To search for specific text, use the “Search” section. You may enter there either single word, or word sentence, or words combined by AND or OR, optionally case sensitive. In the pop-up window, select the found page and then press “s” to skip directly to the found word (see also F1 help there).

And now, enjoy FlagShip!